

Windbit ESW3L2P Switch Series

ESW3L2P: Simplified Gigabit Switch

Introduction

Windbit ESW3L2P series are L2+ access switches launched by Teldat, that boast high-cost performance in a variety of scenarios, including industrial zones, factories, government agencies, and communities.

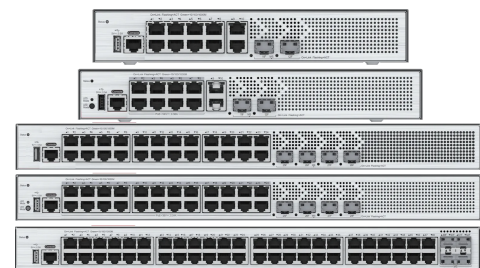
For this series, there are 10/24/48 switch ports models available with features for a better network experience: self-adaptive ports can perform in 10/100/1000M network; auto-learning of MAC addresses ensures error-free data transmission; store-and-forward mode prevents damaged data packets from spreading in the network; traffic control protects the network from being affected by vast amounts of instantaneous data.

Highlight

- Optical and electrical interfaces, 2,5Gbps uplink
- L2+ switches and PoE/PoE+ models
- Enterprise-class high reliability for corporations
- Ideal sound level for quiet offices
- High-bandwidth, low-latency and flexibility
- Compactness
- Cloud Management

Interfaces

10x10/100/1000BASE-T, 2x 2.5GE/1GE SFP	Reference: ESW3L2P-10GE2MS-E
10x10/100/1000BASE-T, 2x 2.5GE/1GE SFP	Reference: ESW3L2P-10GE2MS-P (PoE+)
24x10/100/1000BASE-T, 4x 2.5GE/1GE SFP	Reference: ESW3L2P-24GE4MS-E
24x10/100/1000BASE-T, 4x 2.5GE/1GE SFP	Reference: ESW3L2P-24GE4MS-P (PoE+)
48x10/100/1000BASE-T, 4x 2.5GE/1GE SFP	Reference: ESW3L2P-48GE4MS-E
1 x RJ45 console port	All models
1 x USB port	All models



Competitive Advantages

Flexible platform for all scenarios	Many different port types, 1G(10x/24x/48x) or 2/4x 2.5G(SFP), that also include PoE/PoE+ support, providing convenient access for mass terminals
Low requirements for the installation	Compact size or multiple configuration methods makes these switches the optimal LAN solution for offices, offering IT managers an agile and fast installation
Enterprise-class High Availability	The metal housing can protect devices against external mechanical collisions and ensure normal operation of the devices.
Typical application	ESW3L2P are suitable for various scenarios, including medium-sized enterprises or universities, primary and middle schools, and government institutions.

Key Features

- **Compactness** Compared with switches of common sizes, this series is smaller in size with a decrease in both depth and width. It can be mounted on boxes, shelves as well as 19-inch racks.
- **Enterprise Design** This switch series is designed according to the enterprise product design standard of Teldat. This series passes EMC and reliability tests required for enterprise-class products, including RE, CE, and Surge tests.
- **Active Management Terminal** ESW3L2P series support real-time detection of the operation status and parameters of terminals and resets abnormal terminals based on configured policies.
- **Cloud Management and Zero Configuration Online** ESW3L2P switches are compatible with management tools that facilitate device status query, configuration delivery, and operation and maintenance.
- **Quietness and Energy Saving** ESW3L2P switches are read for workplace sites, without fans in some models, and ? 40dB noise(PoE models) for quiet environments
- **Wide Temperature Range** A wider temperature range(0°C to 45°C) enhances the environmental applicability of the product and can bring longer service life and protect customer investment
- **High Reliability** STP, RSTP, and rapid link detection protocol (RLDP) are supported to bring fast convergence, and the specific CPU protection policy (CPP) protects the CPU from being wasted by illegal and malicious traffic.
- **Simple and Easy Network Maintenance** Web Management is easily accessible with a user plugging in a network cable and configuring the switch via GUI, they support remote management, configuration saving and recovery, and remote fault diagnosis.

HARDWARE TECHNICAL FEATURE

Fixed Service Ports

From 10x to 48x 10/100/1000 BASE-T ports with autonegotiation
2x or 4x 2.5GE/1GE SFP ports

Packet forwarding rate (10x/24x/48x)

22.5Mpps/51Mpps/87Mpps
Switching Capacity(10x/24x/48x)
30Gbps/68Gbps/116Gbps

Dimensions and Weight(10x/24x) PoE models

297 x 170 x 43.6 / 440 x 220 x 43.6 mm
Approximate weight: 2.5/2.8 Kg
Air-cooled heat dissipation (1/2 Fans)

Power over Ethernet support

IEEE 802.3af (15.4 W) and IEEE 802.3at (30 W).
All ports are enabled for PoE/PoE+
Max power out: 125W(10x), 370W(24x)

Dimensions and Weight(10x/24x/48x) no PoE models

260x170x43.6/ 440x220x43.6 / 440x220x43.6 mm
Approximate weight: 2/ 2.5 / 2.8 Kg, all 1RU
Fanless design(No PoE), natural heat dissipation(Except for PoE models)

1x Internal Power supply

Rated voltage range: 100 V to 240 V AC
Frequency: 50 Hz to 60 Hz
Operating Temperature: 0°C to 45°C

SOFTWARE TECHNICAL FEATURE

L2 Switching

802.3az EEE IEEE 802.1Q (4K VLANs) Voice VLAN Port-based
VLAN assignment Basic QinQ and selective QinQ STP (IEEE 802.1.d)
RSTP (IEEE 802.1w), and MSTP (IEEE 802.1s) ERPS (G.8032)
LLDP/LLDP-MED

Security

Filtering of invalid MAC addresses, Hardware CPP, NFPP
IP source guard, IEEE 802.1X authentication
RADIUS and TACACS+

Multicast

IGMP snooping v1/v2
IGMP fast leave

Management

Local GUI, Cloud management
SNMPv1/v2c/v3, CLI (telnet/console)
Syslog/debug, NTP, TFTP, SSH v1.5/v2.0

L3

IPv4/IPv6 static routing RIP, RIPng, OSPFv2, ACLs
Flow-based rate limiting, Port rate limiting IEEE 802.1p/DSCP
DHCP server DHCP client DHCP snooping DHCP relay

QoS

Flow-based rate limiting on the ingress. Port rate limiting
IEEE 802.1p/DSCP traffic classification. 8 priority queues per port
SP, WRR, DRR, SP+WFQ, SP+WRR, SP+DRR queue scheduling

Reliability

RLDP, LACP, Load balancing modes
Rapid Link Detection Protocol (RLDP)
Layer 2 link connectivity detection, and unidirectional link detection

ADDITIONAL TECHNICAL FEATURE

Console interface

1 x RJ45 console port
Management port
1 x USB port

CPU and storage

CPU: ARM Cortex A9, 1.2 GHz
Storage: 512 MB SDRAM 64 MB flash memory
Data packet buffer 512 KB

Installation Mode

Mounted on a workbench/wall/in a rack (cabinet)

MTBF

> 200K



Scenarios

Windbit ESW3L2P Switch Series Datasheet



Founded in 1985, Teldat is a Spanish company whose mission is to provide companies with valuable solutions for cloud access, remote office communications, cyberse-curity and voice/data connectivity both in the office and in specific environments whether they are industrial, railway, vehicles or public services.

Website: www.teldat.com

Teldat Group

SPAIN
Calle Isaac Newton, 10
Tres Cantos - 28760
Madrid (Spain)
Phone:+34 91 807 6565
info@teldat.com

©2022 Teldat S.A.
Publish Date: April, 27th 2022
Version: 20221103113200