

Teldat

# Windbit SDE-11K Series

## Windbit SDE-11K: Branch or Datacenter SD-WAN edge

### Introduction

The SDE-11K is a powerful and flexible platform thanks to an optimized hardware architecture that includes several 10Gbps interfaces.

This new device, with Intel architecture, delivers high performance and low processing latencies being the optimal solution for headquarters or main offices with top requirements for a large number of users.

Together, HW innovation and SW evolution in this device offer customers a high level of productivity and a very good user experience.

It is a carrier-grade device that can migrate to SDWAN or secure services in an easy way delivering all the Teldat SDWAN advantages to IT managers.

### Highlight

- Ready for 20Gbps aggregated services
- Traditional or SDWAN integrated edge router
- Based on trusted x86 architecture
- Optimal solution for regional/big branch offices or datacenter infrastructure
- Redundant power supply(Optional)
- 5G models for high quality backup(Optional)

### Interfaces

|                          |  |
|--------------------------|--|
| High speed connections   | 4x SFP/SFP+ 1/10G ports                      |
| Low speed connections    | 4x RJ45 GE ports                             |
| Radio interfaces         | 1x4G/5G SA/NSA and/or Wi-fi 7 Dual Radio 2x2 |
| Display port / USB ports | 1 x VGA / 2 x USB 2.0(Future purposes)       |
| Console/Management ports | 1 x Serial RJ45/1 x RJ45 1Gbps, dedicated    |
| Reset button             | Yes  |



## Competitive Advantages

|                                     |   |
|-------------------------------------|---|
| Flexible platform for all scenarios | It is the perfect solution as router or SD-WAN edge for multi-WAN or multi-LAN scenarios, supporting a wide variety of connectivity configurations.         |
| Cloud or embedded security          | The new SDE-11K is integrated with Teldat SASE architecture, including secure web gateway (SWG) and next generation firewall (NGFW)                         |
| Extended Detection and Response     | The SDE-11K permits to IT teams to regain visibility and control of its Cloud-based physical and virtual networks thanks to the Teldat be.Safe XDR Solution |

## Key Features

- **High performance for advanced routing services** Reliable in scenarios up to 20Gbps IMIX aggregated with services thanks to its powerful hardware multi-core architecture
- **Flexible high speed ports configuration** 4x 10Gbps interfaces are available in any type of configuration, as WAN or LAN ports. And 4x RJ45 GE interfaces for full flexibility in all scenarios.
- **Corporate security cloud solutions** The SDE-11K supports software security features and additional cloud services like be.Safe Smart for soft requirements in security and be.Safe Premium for complete threat protection.
- **Console port for out-of-band management** Operator/integrator managed services require out-of-band management to prevent them from interfering with customer networks. A console port is available for local managers with secure access.
- **Dying Gasp option** Power failure alarm notification facilitates diagnosis and speeds up incident resolution, optimizing committed SLAs.
- **Redundant power supply** Critical services must be available 24 hours a day, 7 days a week, 365 days a year, so for these scenarios, the customer will always introduce devices with redundant power supply(Option).
- **Professional and carrier grade software features** The SDE-11K software is the standard Teldat OS that has been validated in many validation processes for corporate services around the world

## HARDWARE TECHNICAL FEATURE

### 10Gbps interfaces

4x 10GBase-R (SFP+) ports  
SFP+: Up to 10Gbps  
1000-Base-X (SFP), 10G-BaseR (SFP+), SFP/SFP+ MSA Compliant

### Dimensions and Weight

440 mm × 360 mm × 44.5 mm (1U Rackmount)  
Approximate weight: pending  
Format: 19-inch chassis with rack accessory; front to back fan flow design

### Up to 2x redundant power sources

100Vac/240Vac, Minimum: 85Vac, Maximum: 264 Vac  
60Hz/50Hz, Minimum: 47Hz, Maximum: 63Hz  
Max. Power Consumption: 72W

### 1Gbps interfaces

4x RJ45 GE ports  
RJ45: 10Base-T, 100Base-T, 1000Base-T  
BaseT automatic detection, Duplex/half duplex automatic negotiation, MDI/MDI-X crossover detection

### Environmental specifications

Temperature: 0 to 40 °C, Storage: -40°C - +70°C  
Atmospheric pressure: 700 to 1060 mbars  
Operational: 5-90% non-condensing

### 5G WWAN (Some models)

Radio module 5G-NR (Sub-6GHz) SA/NSA Global  
Model: SDXIP002-11K: Chassis with 4x10GbE SFP+, 4xGbE RJ45, 5G, 1x PSU  
WLAN (Some models)

## SOFTWARE TECHNICAL FEATURE

### IP protocol

ARP, MTU discovery, NAT/PAT, ICMP, BFD, Netflos(IPFix)  
RIPv1/2, OSPFv3, BGPv4, Load balancing, PBR-Policy Based static/dynamic Routing  
Virtual Router Forwarding (Multi-VRF)

### Security

IPSec support in transport and tunnel mode. DMVPN  
Pre-shared authentication, RSA, Certificates, MDS, SHA-1  
Encrypted: DES (56 bits), 3DES (168 bits), AES (128, 192 and 256 bits)

### IP services

DHCP, DNS, FTP, SFTP, SSH server v1/2, Telnet server and client  
NTP, Syslog, SCP client. TFTP server  
DHCP, dynDNS relay

### IPv6

Dual Stack, IPv6oIPv4, IPv4oIPv6, GRE, 6rd, DHCP, ICMPv6, SLAAC  
Static and dynamic routing RIPng, OSPFv3

### SDWAN networks

Overlay over hybrid networks with App-aware routing, QoS and Visibility  
Central SD-WAN flow control including Zero Touch Provisioning  
Applications Service Chaining

## ADDITIONAL TECHNICAL FEATURE

### Accessories(Factory Options)

Dying Gasp option  
Trusted Platform Module(TPM 2.0)(Roadmap)  
Integrated eSim(Roadmap)

### Memory

RAM: 8GB DDR4  
FLASH: 32GB SSD

### IP protocol (2)

Multicast: IGMP (v1,v2, v3), PIM-SM, PIM-SSM,  
IPSLA service probes (delay, package loss, jitter)  
High availability: VRRP

### Security (2)

Certificates: CSR, SCEP, X.509v3, PKIX, LDAP revocation  
Static and dynamic access lists(ACLs) and session-based Firewall  
DoS/DDoS detection, 802.1X control access

### Quality of Service QoS

IP Precedence, DiffServ and COS labeling for BW management  
BW prioritization and limitation  
Up to 16 queues per interface. PQ, LLQ, WFQ, CBWFQ, WRED

### Management

CLI configuration and storage in a plain text file  
Cloud Net Manager tool(HTTPS based)  
RADIUS and TACACS+ AAA support, SNMPv1, v2c y v3

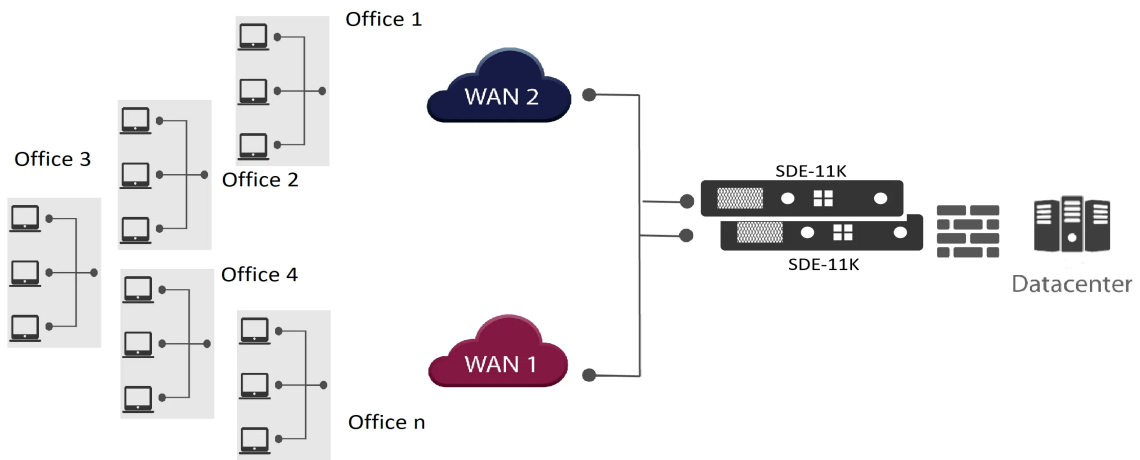
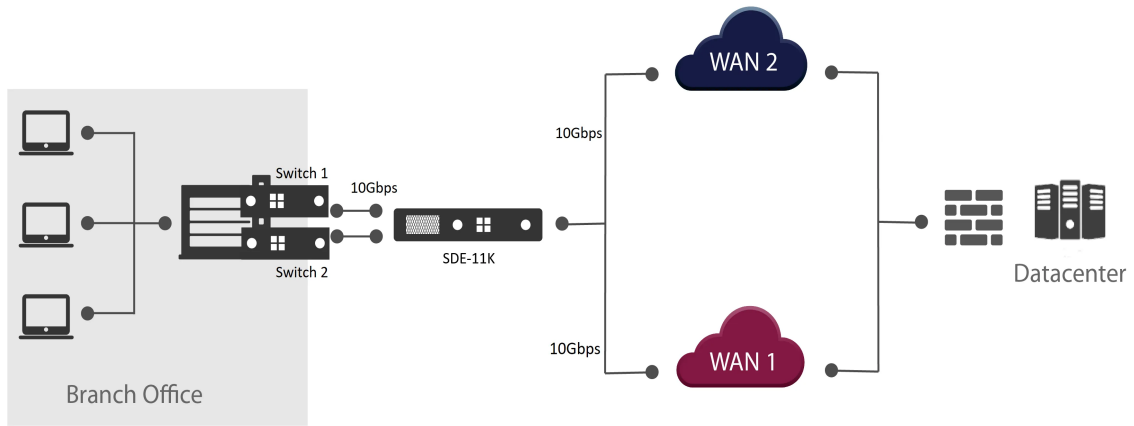
### Rack kit 19"

Included by default

### \*Product in roadmap

\*SW features are provisional, pending for final product release.

Scenarios



Teldat Group